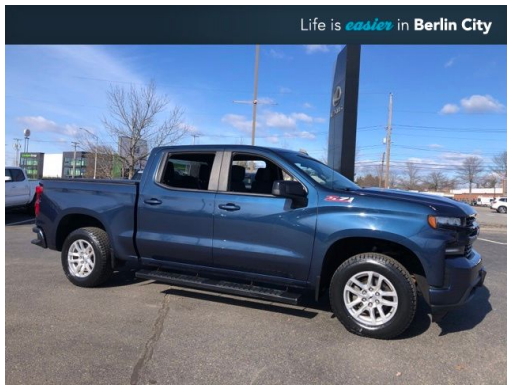


Call: (207) 616-6258

2020 CHEVROLET SILVERADO 1500 RST

\$31,617



191 RIVERSIDE ST. PORTLAND ME,04103

[Scan QR Code or Click Here](#)



VIN: 3GCUYEED2LG307429

STK#: TT202247A

EXTERIOR COLOR: NORTHSKY BLUE METALLIC

DRIVETRAIN: 4WD

TRIM: RST

CONDITION: USED

MPG HIGHWAY: 22

COLOR: NORTHSKY BLUE METALLIC

MILEAGE: 93948

INTERIOR COLOR: JET BLACK

TRANSMISSION: 8-SPEED AUTOMATIC

ENGINE: ECOTEC3 5.3L V8

MPG CITY: 16

DESCRIPTION/OPTIONS: CARFAX One-Owner. Clean CARFAX. EcoTec3 5.3L V8 8-Speed Automatic 4WD Northsky Blue Metallic ONE OWNER. CLEAN CARFAX/NO ACCIDENTS REPORTED, RECENT TRADE IN, BLUETOOTH, BACK UP CAMERA, 4X4, Silverado 1500 RST 4WD, 4D Crew Cab, EcoTec3 5.3L V8, 8-Speed Automatic, 4WD, Northsky Blue Metallic, Jet Black w/Cloth Seat Trim, 12-Volt Rear Auxiliary Power Outlet, 2 USB Ports (First Row), 3.23 Rear Axle Ratio, 4-Way Manual Driver Seat Adjuster, 4.2" Diagonal Color Display Driver Info Center, 6-Speaker Audio System, All-Star Edition, All-Weather Floor Liner (LPO) (AAK), Apple CarPlay/Android Auto, Bed Protection Package, Bluetooth® For Phone, Body Color Grille, Chevytec Spray-On Black Bedliner, Cloth Rear Seat w/Storage Package, Color-Keyed Carpeting Floor Covering, Compass, Convenience Package, Deep-Tinted Glass, Dual Exhaust w/Polished Outlets, Electric Rear-Window Defogger, Electrical Lock Control Steering Column, Front fog lights, Front Frame-Mounted Black Recovery Hooks, Front LED Fog Lamps, Front Rubberized Vinyl Floor Mats, Heated door mirrors, Heated Driver & Front Outboard Passenger Seats, Heated Steering Wheel, Heavy-Duty Rear Locking Differential, High Capacity Air Filter, High Gloss Black Mirror Caps, Hill Descent Control, Integrated Trailer Brake Controller, Keyless Open & Start, LED Cargo Area Lighting, Manual Tilt-Wheel Steering Column, Off-Road Suspension, OnStar & Chevrolet Connected Services Capable, Power Door Locks, Power Front Windows w/Driver Express Up/Down, Power Front Windows w/Passenger Express Down, Power Rear Windows w/Express Down, Preferred Equipment Group 1SP, Rear 60/40 Folding Bench Seat (Folds Up), Rear Dual USB Charging-Only Ports, Rear Rubberized-Vinyl Floor Mats, Rear Vision Camera, Rear Wheelhouse Liners, Remote Vehicle Starter System, Single-Zone Manual/Semi-Automatic Air Conditioning, Steering Wheel Audio Controls, Steering Wheel Mounted Electronic Cruise Control, Theft Deterrent System (Unauthorized Entry), Trailing Package, Urethane Steering Wheel, Wheels: 18" x 8.5" Bright Silver Painted Aluminum, Z71 Off-Road & Protection Package, Z71 Off-Road Package.Recent Arrival!* At Berlin City Toyota of Portland you can buy with confidence knowing all of our certified vehicles undergo a rigorous reconditioning process and come with a 2 month/2,000 mile warranty. And if for any reason you are not fully satisfied with your purchase bring it back within 4 days or 200 miles, no questions asked. Want to save more time, we'll even deliver it to your doorstep within 24 hours. That's how we make car buying easy. Quoted price subject to change without notice to correct errors or omissions. All figures are estimates only and are not guaranteed as accurate. Dealer document processing charge of \$799 not included in quoted price. Sales tax or other taxes, tag, title, registration fees, and government fees is not included in quoted price. All vehicles subject to prior sale.

All-Star Edition	All-Star Edition w/PCH	Bed Protection Package	Cloth Rear Seat w/Storage Package
Convenience Package	Preferred Equipment Group 1SP	Trailing Package	Z71 Off-Road & Protection Package
Z71 Off-Road Package	2 USB Ports (First Row)	6-Speaker Audio System	Radio data system
Radio: Chevrolet Infotainment 3 System	Rear Dual USB Charging-Only Ports	Steering Wheel Audio Controls	Air Conditioning
Dual-Zone Automatic Climate Control	Electric Rear-Window Defogger	Rear window defroster	Single-Zone Manual/Semi-Automatic Air Conditioning
12-Volt Rear Auxiliary Power Outlet	4-Way Manual Driver Seat Adjuster	Bluetooth® For Phone	Power Front Windows w/Driver Express Up/Down
Power Front Windows w/Passenger Express Down	Power Rear Windows w/Express Down	Power steering	Power windows
Remote keyless entry	Remote Vehicle Starter System	Steering wheel mounted audio controls	Heavy Duty Suspension
Manual Tilt-Wheel Steering Column	Manual Tilt/Telescoping Steering Column	Off-Road Suspension	Speed-sensing steering
Traction control	4-Wheel Disc Brakes	ABS brakes	Dual front impact airbags
Dual front side impact airbags	Electrical Lock Control Steering Column	Front anti-roll bar	Front wheel independent suspension
Keyless Open & Start	Low tire pressure warning	Occupant sensing airbag	Overhead airbag
Power Door Locks	Brake assist	Electronic Stability Control	Hill Descent Control
Rear Vision Camera	Delay-off headlights	Front fog lights	Fully automatic headlights
Panic alarm	Security system	Theft Deterrent System (Unauthorized Entry)	Speed control
Steering Wheel Mounted Electronic Cruise Control	Heavy-Duty Rear Locking Differential	170 Amps Alternator	220 Amps Alternator
Auxiliary External Transmission Oil Cooler	External Engine Oil Cooler	High Capacity Air Filter	Body Color Grille
Bumpers: body-color	Chevytec Spray-On Black Bedliner	Dual Exhaust w/Black Exhaust Tips	Dual Exhaust w/Polished Outlets
Front LED Fog Lamps	Front License Plate Kit	Heated door mirrors	High Gloss Black Mirror Caps
Hitch Guidance	LED Cargo Area Lighting	Power door mirrors	Rear step bumper
Rear Wheelhouse Liners	4.2" Diagonal Color Display Driver Info Center	Rear 60/40 Folding Bench Seat (Folds Up)	All-Weather Floor Liner (LPO) (AAK)
Apple CarPlay/Android Auto	Chevrolet Connected Access Capable	Cloth Seat Trim	Color-Keyed Carpeting Floor Covering
Compass	Driver door bin	Driver vanity mirror	Front reading lights
Front Rubberized Vinyl Floor Mats	Heated Steering Wheel	Illuminated entry	Leather Wrapped Steering Wheel
OnStar & Chevrolet Connected Services Capable	Outside temperature display	Overhead console	Passenger vanity mirror
Rear reading lights	Rear Rubberized-Vinyl Floor Mats	Tachometer	Tilt steering wheel
Trip computer	Urethane Steering Wheel	Voltmeter	10-Way Power Driver Seat w/Lumbar
40/20/40 Front Split-Bench Seat	Heated Driver & Front Outboard Passenger Seats	Rear 60/40 Folding Bench Seat (Folds Up)	Split folding rear seat
Front Center Armrest w/Storage	Front Frame-Mounted Black Recovery Hooks	Integrated Trailer Brake Controller	Wheels: 18" x 8.5" Bright Silver Painted Aluminum
Deep-Tinted Glass	Variably intermittent wipers	3.23 Rear Axle Ratio	ONE OWNER
CLEAN CARFAX/NO ACCIDENTS REPORTED	RECENT TRADE IN	BLUETOOTH	BACK UP CAMERA
4X4			

Berlin City Toyota



© 2022 AutoDrivenMarketing.com